



# REGULATION PACKAGE

[WWW.WUSHUCANADA.COM](http://WWW.WUSHUCANADA.COM)  
[INFO@WUSHUCANADA.COM](mailto:INFO@WUSHUCANADA.COM)



Scan QR CODE TO REGISTER  
Early Bird Rate Deadline - April 18th, 2026  
Final Entry Deadline - May 2nd, 2026

## Contents

<i>I.</i>	<i>INTRODUCTION</i>	<i>3</i>
<i>II.</i>	<i>GENERAL PROGRAM</i>	<i>3</i>
<i>III.</i>	<i>GENERAL INFORMATION</i>	<i>3</i>
<i>IV.</i>	<i>DATES AND VENUE</i>	<i>4</i>
<i>V.</i>	<i>ACCOMMODATIONS</i>	<i>4</i>
<i>VI.</i>	<i>FOOD SERVICES</i>	
<i>VII.</i>	<i>REGISTRATION &amp; FEES</i>	<i>5</i>
<i>VIII.</i>	<i>ARRIVAL &amp; ACCREDITATION</i>	<i>8</i>
<i>IX.</i>	<i>TEAM QUALIFICATION &amp; PARTICIPATION</i>	<i>9</i>
<i>X.</i>	<i>COMPETITION EVENTS</i>	<i>10</i>
<i>XI.</i>	<i>COMPETITION RULES</i>	<i>12</i>
<i>XII.</i>	<i>UNIFORMS &amp; EQUIPMENT</i>	<i>12</i>
<i>XIII.</i>	<i>PLACING &amp; AWARDS</i>	<i>13</i>
<i>XIV.</i>	<i>DRAWING LOTS / SCHEDULE</i>	
<i>XV.</i>	<i>HOW TO REGISTER ONLINE</i>	<i>15</i>

## I. INTRODUCTION

---

Join us for the **2026 PROVINCIAL WUSHU CLASSIC & Ontario Summer Games QUALIFIER!** This event is a celebration of the incredible talent and dedication of Wushu athletes and coaches in Wushu, marking a significant milestone in the sport's growth across Canada. With medaling opportunities in various events including Taolu, Sanda, Taiji, Traditional KungFu and the Wushu Warrior Challenge; This is your chance to showcase your skills and passion for the martial arts. Whether you're an athlete, coach, official, or spectator, this event promises to be an unforgettable experience filled with fierce competition and camaraderie. Don't miss out on this thrilling celebration of martial arts excellence – come join us and be a part of something truly special!

## II. GENERAL PROGRAM

---

Date	Time	Content
May 16-Day1	9:00am-10:00am	Warm-up
May 16-Day1	10:00am-1:00pm	Session 1
May 16-Day1	1:00pm-4:00pm	Session 2
May 16-Day1	4:00pm-7:00pm	Session 3
May 17-Day 2	9:00am-9:30am	Warm-up
May 17-Day 2	9:30am-12:00pm	Session 1
May 17-Day 2	12:00pm-3:00pm	Session 2
May 17-Day 2	3:00pm-5:00pm	Session 3

## III. GENERAL INFORMATION

---

### General Contacts

#### Organizing Committee - WushuOntario

Contact: Alan Tang

Telephone: +1 (416) 801-5614

E-mail: [info@wushucanada.com](mailto:info@wushucanada.com)

Website: [www.wushucanada.com](http://www.wushucanada.com)

Address: 2370 Midland Avenue, #B23-25, Scarborough, Ontario M1S 5C6

## IV. DATES AND VENUE

---

The **2026 PROVINCIAL WUSHU CLASSIC COMPETITION & Ontario Summer Games QUALIFIER** will be held in Scarborough, Ontario and will feature numerous events for participants to take part in. Early Bird registrations will be open until **Saturday, April 18<sup>th</sup>, 2026**, at **11:59pm** with special rates. Final Entry deadline is **Saturday, May 2<sup>nd</sup>, 2026** at **11:59pm** (Eastern Standard Time).

Event Dates	Entry Deadlines
Competition Day 1 - May 16 <sup>th</sup> , 2026	Early Bird Saturday, April 18th, 2026
Competition Day 2 - May 17 <sup>th</sup> , 2026	Final Entry Friday, May 2nd, 2026

### The Centennial College Athletic & Wellness Centre Gymnasium (AWC)

941 Progress Ave. Scarborough ON

The Multipurpose Hall is a facility for training, competition, and sport hosting.



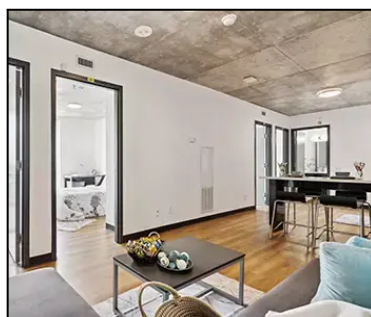
- Main Gym 1 & 2 - Competition and Spectators
- Gym 3: General Warm Up area, Wushu Warrior Challenge
- Wellness Centre: Food Services, Volunteers, Officiating Lounge
  - General Room 1/2: medical/storage.
  - Cafeteria: Athlete Break room area

## V. ACCOMMODATIONS

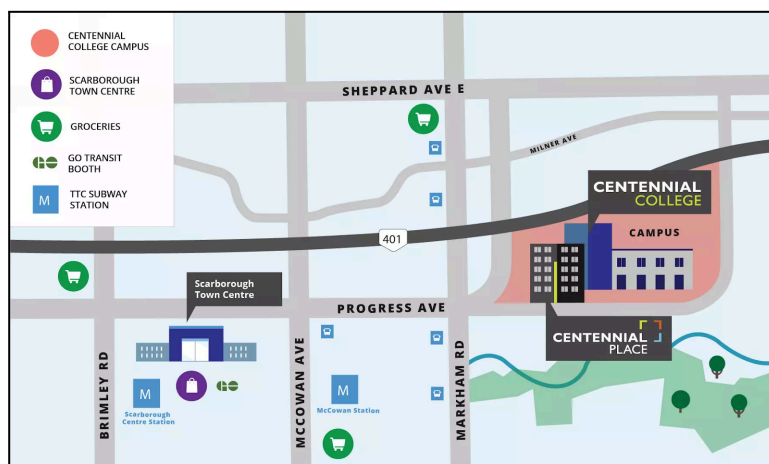
---

All accommodations are the sole responsibilities of the participants and guests of the **2026 PROVINCIAL CLASSIC COMPETITION & OSG QUALIFIERS**.

- Centennial Place Residence - A limited number of **On-Campus Residences** are available for special rate booking located at 937 Progress Ave., Scarborough ON M1G 3T8
  - **Room Type:** a 4-bedroom Quad with 2 shared bathrooms.
  - **Available:** 15 Quads are available for travelling teams (total of 60 guests)
  - **\$269.00/night** (plus hst) for each Quad. *[works out to \$67.29/guest]*
  - The reservation deadline is **Friday May 1st**.
  - **Reservation phone: 1-416-438-2216 - [Centennial Place-Wushu Ontario Accommodation's Booking 2026 – Fill out form](#)**



50



**Alternate Accommodations can be found at:**

- **Best Western Plus Executive Inn** located 0.8km from the venue on 38 Estate Dr. Scarborough ON M1H 2Z1. 416-430-0444
- **Holiday Inn Express Toronto East** located 0.8km from the venue on 50 Estate Dr. Scarborough ON M1H 2Z1. 416-439-9666

## VI. FOOD SERVICES

---

Plenty of nearby restaurants are available at your own discretion accessible with a vehicle. The Cafeteria area is available for on-site eating. **NO FOOD OR DRINK IN THE GYMNASIUM.**

## VII. REGISTRATION & FEES

- A. Introducing the ALL NEW WushuCanada REGISTRATION SYSTEM - in partnership with FITOFAN.

All PAYMENTS AND REGISTRATION entries must be submitted through the FITOFAN System where participants will now have a fully immersive experience with WushuCanada Events.

- Live Scoring - Start Lists - Event Orders - Real Time Scheduling
- Results Tracker - Interactive Tools - Videos - Training Tools
- Ranking System - Community Interaction and Much More!

- i. **Step 1** - SCAN QR Code or go directly to <https://fitofan.com/2026-prov-wushu-classic>
- ii. **Step 2** - Sign Up as a participant or parent account.  
Each participant should use a UNIQUE email for the best online experience.
- iii. **Step 3** - Input appropriate participant Age / Level of Experience or Class of Competition / Select your associated Member Club and Personal Details.  
Then Select your appropriate **Events** based on **Category** and **Divisions**.
- iv. **Entry Fee for Observers and Spectators is \$20.00** valid for both days.  
Complimentary Accreditation is provided for Team leaders and Coaches that are registered as High-Performance or General Coach Members of WushuCanada ONLY.
- v. **FEES:**

Role	EARLY BIRD Before April 18th	AFTER April 18th
Athletes	<u>High Performance Events</u> Taolu/Sanda (Class B,C) \$125.00 - First event	<u>High Performance Events</u> Taolu/Sanda (Class B,C) \$155.00 - First event
	<u>Recreational Events</u> Taolu/Sanda (Class D,E) \$95.00 - First event	<u>Recreational Events</u> Taolu/Sanda (Class D,E) \$125.00 - First event
	\$45.00 - per additional event *Non-Club Participants add \$30.00	\$55.00 - per additional event *Non-Club Participants add \$30.00

- vi. **Post-deadline Entries or Changes**  
After the final entry deadline, any request to change the entry (including late entry) will be handled as follows:

- 1) Late entries are subject to the approval of the Organization Committee and, if accepted, are subject to a late-entry fee of \$100 per participant.
- 2) Replacing a participant is subject to approval by the Organization Committee and, if accepted, is subject to a replacement fee of \$50 per participant.
- 3) If changes are required due to incorrect or missing registration information, those changes are subject to approval by the Organization Committee and if accepted, a fee of \$50 per change will be charged.
- 4) No Refunds will be issued if a participant fails to attend.
- 5) If your Club is not a recognized member of WushuCanada you may register as an independent athlete.
- 6) Full Medical is Required for Sanda Class B Division (ECG/Blood Test/18+only)
- 7) Partial Medical Documentation is Required for Sanda Class C Division (ECG)
- 8) Extended Waiver of Liabilities is Required for ALL Athletes of the event.

[CLICK HERE](#) for **Medical Intake Form** to be brought to your doctor (**VALID FOR 1 YEAR**) PARTICIPANT WAIVER to be completed via online registration.

**Early Bird Entry ends – Saturday April 18<sup>th</sup>, 2026.**

**Final Entry – Friday, May 2<sup>nd</sup>, 2026.**

## **VIII. ARRIVAL & ACCREDITATION**

---

- A. **Arrival for all out of town participants should be scheduled no later than May 15th, 2026. Local Transportation is the responsibility of each guest.**
- B. **Event Check in:** All participants will be listed on the event manifest **prior to May 15th, 2026.** Participants must ensure they are allocated in the proper events prior to arrival. At the event, role calls for every division will be handled by the Marshalling Team and can be verified at the Marshalling Station.
  - i. The venue will be open at **8:00am** for officials and participants and **9:30am** for general observers and spectators on **Saturday, May 16<sup>th</sup>, 2026.**
  - ii. The event is scheduled to begin at **10:00am** on **Saturday** and **9:00am** on **Sunday.**
  - iii. The organizing committee has the right to check the athlete's physical health and credentials, and should it be deemed that an athlete is not healthy or eligible to compete, his or her participation will be revoked without reimbursement.
  - iv. Accreditation Bands will be given to the Team leader and Coaches prior to the event or upon arrival at the check in station.  
**\*Accreditation Bands must be shown to enter the competition floor or warm up areas.**

## IX. SUMMER GAMES / PAN AM QUALIFICATIONS

---

### Selection Events:

Ontario Summer Games Final Positions

July 30-August 2, 2026, Kitchener/Waterloo, Wilfred Laurier University

15th Pan American Wushu/Traditional Championships

October 3-11, 2026 - Buenos Aires, Argentina

**\* Participants Must Register in High Performance Events to Qualify**

## X. COMPETITION EVENTS and PARTICIPATION

---

Each athlete may, at most, register to participate in 5 events comprising of:

- Traditional Routines Max 1 routine per category up to 3 events.
- Wushu Taolu Max 1 barehand, 1 short weapon, 1 long weapon routine.
- Taiji Maximum 3 Events.
- Wushu Warrior Challenge.
- One Sanda Combat Event.
- One (1) duilian (choreographed sparring) routine, consisting of 2-3 people (male and female athletes may be mixed) at most. Each participant must register duilian as an individual event on their application.

### Individual Events

#### i. Traditional KungFu Events

Category	Age
Atom	8 and below
Children	9 - 11
Youth	12 - 14
Junior	15 - 17
Adult	18 - 39
Senior	40+

### Levels of Participation;

**\* High Performance OSG Qualifiers (1 Barehand + 1 Weapon Combined)**

**\* Recreational Levels: Novice, Intermediate, Advanced.**

#### a. Traditional KungFu Bare Hand Routine Events

- 1) Traditional Northern Shaolin barehand styles
- 2) Traditional Southern barehand styles
- 3) Traditional Animal/Interpretive styles

#### b. Traditional KungFu Short Weapon Routine Events

Dao (Broadsword), Jian (Straight Sword), Long Tassel Straight sword, Fan, Dagger, Hook Swords, Bain Gun (Short Cudgel), Cane, Baton, Crutch

(Chinese Tonfa), Single swords or sticks, Deer Horn and other KungFu short weapon forms.

**c. Traditional KungFu Long Weapon Routine Events**

Gun, Qiang, Pudaο, Kwandao, Cane, Stick, Shovel, Fork, Nangun, and other KungFu long weapon forms.

**d. Traditional KungFu Soft Weapon Routine Events**

Nine section chain whip, nunchuck, three section staff, rope dart and other KungFu soft weapons.

**e. Traditional KungFu Double Weapon Routine Events**

Double Swords, Double Hooks, Double Daggers, etc

NOTE: Specific Divisions based on Levels will be assigned based on participation numbers upon registration.

**ii. Contemporary Wushu Routine Events**

(Difficulty/Nandu Scoring will NOT be utilized at this event)

Category	Age
Atom	8 and below
Group C	9 - 11
Group B	12 - 14
Group A	15 - 17
Senior	18 - 39

**\* Levels: High Performance Qualifiers (3 Events + Warrior Challenge)**

**\* Recreational Levels: Open Routines - Novice/Intermediate**

**a. Contemporary Wushu Bare Hand Forms**

Open Changquan, A Changquan, B Changquan, C Changquan  
Open Nanquan, A Nanquan, B Nanquan, C Nanquan

**b. Contemporary Wushu Short Weapon Forms**

Open Daoshu, A Daoshu, B Daoshu, C Daoshu  
Open Jianshu, A Jianshu, B Jianshu, C Jianshu  
Open Nandao, A Nandao, B Nandao, C Nandao

**c. Contemporary Wushu Long Weapon Forms**

Open Gunshu, A Gunshu, B Gunshu, C Gunshu  
Open Qiangshu, A Qiangshu, B Qiangshu, C Qiangshu  
Open Nangun, A Nangun, B Nangun, C Nangun

iii. **Taiji Events:**

Category	Age
Youth	U18
Adult	18 - 49
Senior	50+

\* High Performance Qualifiers (1 Barehand + 1 Weapon Combined)

\* Recreational Levels: Open Level

Category	Barehand	Sword "Jian"	Other
Optional Routines	Taijiquan	Taijijian	Taijishan
New Standardized	Yang	Yang	
	Chen	Chen	
Compulsory	3rd Set (39)	3rd Set (36)	3rd Set Taijishan
	Yang (40)		Traditional Yang
	Chen (56)		Traditional Chen
	Wu (45)		Traditional Wu
	42 Taijiquan	42 Taijijian	
	24 Taijiquan	32 Taijijian	
Other	Other Taijiquan	Other Taijijian	Other Weapon

iv. **WUSHU WARRIOR CHALLENGE - Open to ALL Martial Arts Styles**  
Age Groups & Divisions

Category	Age
Atom	8 and below
Children	9 - 11
Youth	12 - 14
Junior	15 - 17

## Requirements

Event 1: Strength Challenge

Event 2: Speed Challenge

Event 3: Balance Challenge

Event 4: Accuracy Challenge

Event 5: Endurance Challenge

Event 6: Stamina Challenge

Event 7: Stance Challenge

Event 8: Difficulty Challenge

30 sec. Push-up Challenge

How many snap kicks in 30 sec

Single Leg Balance on Box

Weapon Strike through a target

Bar Hang

Jump Course Challenge

Mabu, contacting apparatus

Jump 360 rotation into stance 30 sec.

v. **COMBATIVE EVENTS**

Sanda (Free-Fighting) Weights and Categories are as follows:

<b>Recreational Divisions</b>			
<b>Class</b>	<b>Group</b>	<b>Gender</b>	<b>Weight Categories</b>
<b>E</b>	Atom 6-8	Male/Female	<20k, 22kg, 24kg, 26kg, 28kg, 30kg
<b>D</b>	Children 9-11	Male/Female	<26kg, 28kg, 30kg, 32kg, 34kg, 36kg, 39kg, 42kg, 45kg, 48kg
	Junior 12-14	Male/Female	<39kg, 42kg, 45kg, 48kg, 52kg, 56kg, 60kg, 65kg, 70kg, 75kg,
	Youth 15-17	Male/Female	<48kg, 52kg, 56kg, 60kg, 65kg, 70kg, 75kg, 80kg, 85kg, 90kg
	Prime 18+	Male/Female	<48kg, 52kg, 56kg, 60kg, 65kg, 70kg, 75kg, 80kg, 85kg, 90kg, 100kg

<b>High-Performance Divisions</b>			
<b>C</b>	Junior 12-14	Male/Female	<39kg, 45kg, 52kg, 60kg, 70kg, 75kg
<b>OSG C-Class Qualifier</b>	Junior 12-14	Male	42kg, 48kg, 56kg, 65kg
		Female	42kg, 48kg
<b>C</b>	Youth 15-17	Male/Female	48kg, 52kg, 56kg, 80kg, 85kg, 90kg
<b>OSG C-Class Qualifier</b>	Youth 15-17	Male	60kg, 65kg, 70kg, 75kg
		Female	52kg, 56kg
<b>C</b>	Prime 18+	Male/Female	48kg, 52kg, 56kg, 60kg, 65kg, 75kg, 80kg, 85kg, 90kg, 100kg, 100kg+
<b>B C-Class</b>	Junior 12-14	Male/Female	<39kg, 42kg, 45kg, 48kg, 52kg, 56kg, 60kg, 65kg, 70kg, 75kg,
	Youth 15-17	Male/Female	<48kg, 52kg, 56kg, 60kg, 65kg, 70kg, 75kg, 80kg, 85kg, 90kg
	Prime 18+	Male/Female	<48kg, 52kg, 56kg, 60kg, 65kg, 70kg, 75kg, 80kg, 85kg, 90kg, 100kg

## COMPETITION RULES

---

### A. Competition Rules and Judging Methods

- i. Unless otherwise stated within these regulations, the competition will be conducted in accordance with the:
  - a. **Taolu Events: Traditional, Taiji and Contemporary Wushu** will be conducted in accordance with the 2019 IWUF “Traditional Wushu Competition Rules and Judging Methods (Trial)”
- ii. The Rules and Methods may be interpreted solely at the discretion of the Organization Committee. In the event of language discrepancies in the "Rules" and "Methods", the English text shall prevail.

### B. Event Time Requirement

- i. The competition rules applied will conform to the 2019 IWUF “Traditional Wushu Competition Rules and Judging Methods (Trial)”.
- ii. For compulsory Wushu, Taijiquan and compulsory Taiji weapon routines, there will be no point deductions for the omission of set techniques.
- iii. Accompanying music is required for group routines and must be provided by the athletes themselves on a Bluetooth Device. Accompanying music may not include vocals of any form. Should accompanying music include vocals, or should no accompanying music be provided, the head judge will deduct 0.1 points.

## XI. UNIFORMS & EQUIPMENT

---

### A. Uniform and Equipment Requirements and Procedures

- i. Competition Requirements
  - a. All athletes shall wear wushu competition uniforms in compliance with the rules during all events. All athletes must provide their own uniform.
  - b. All weapons must conform to the requirements as stipulated in the Rules. All athletes must provide their own weaponry.
- ii. Clothing Requirements for Awards Ceremony (Combat Events)
  - a. Medalists are expected to attend the Awards Ceremony in their Club or Team uniforms; however, they are permitted to wear competition uniforms should the ceremony take place immediately after the competition.
  - b. Athletes are expected to take off caps/hats during the ceremony.
  - c. Athletes and officials are not allowed to take any religious symbols to the podium.

- iii. Compliance Check at Roll Call Center
  - a. All athletes are required to attend the initial roll call thirty (30) minutes prior to the start of their competition event and be present for all subsequent roll calls. Failure to be present for three (3) roll calls will result in forfeit.

## **XII. PLACING & AWARDS**

---

### **A. Placing & Awards**

- i. In general, each event within each age group (for male and female) will have two distinct groups: Combat Awards and Taolu Awards. The 3 groups will be awarded as follows:

#### **Combat Event Awards - Sanda Events**

- a. 1st Place = Awarded to the highest-ranking athlete.
- b. 2nd Place = Awarded to the second highest ranking athlete.
- c. 3rd Place = Awarded to the third highest ranking athlete.

#### **Wushu Warrior Event Awards**

- a. First Category Prize = Awarded to Achievement 90-100
- b. Second Category Prize = Awarded to Achievement 75-89
- c. Third Category Prize = Awarded to Achievement 74 and Below

#### **High Performance Taolu Event Awards including Duilian**

- a. 1st Place = Awarded to the highest-ranking athlete.
- b. 2nd Place = Awarded to the second highest ranking athlete.
- c. 3rd Place = Awarded to the third highest ranking athlete.

#### **Recreational Taolu Event Awards including Duilian**

- a. First Category Prize = Awarded to TOP ATHLETE OF CATEGORY.
- b. Second Category Prize = Awarded to NEXT 20% of the athletes.
- c. Third Category Prize = Awarded to REMAINDER of the athletes
- d. Category prize recipients will be awarded a medal.
- e. If there are less than 6 participants in any category, the group will be consolidated with the most appropriate age bracket.

The awarding ratios will be based on the actual number of athletes in an event and a rounding method will be implemented.

- ii. For individual events, within each age group, for male and female, in which the total number of registered athletes is five (5) people or fewer, these events may be combined. Characteristic similarity of the styles, ages, etc. will be considered when events are combined.
- iii. For individual events, within each age group, for male and female, in

which the total number of registered athletes is six (6) people or more, these events will be individual style/routine events with awarding in accordance with the above guidelines.

- iv. Each event will be limited to Twenty (20) athletes. If the number of registered athletes for a particular discipline exceeds thirty (30), athletes for that event will be randomly and evenly divided into two or more groups.

#### **B. Awards Ceremony**

- i. Athletes having won a medal in Taolu events will be awarded at the end of each event at the awards centre. Combat athletes are required to attend the Awards Ceremony to receive their medals in person at the end of Day 2. In case a medalist is unable to attend the ceremony for a valid reason, his/her medal may be presented to an official of the relevant Team. If an athlete is absent during the Awards Ceremony without valid reason, he/she will forfeit the right to receive his/her medal.
- ii. Awards will be distributed at the awards area the moment final results are provided and confirmed.

#### **C. Participation Certificate**

- i. All members of each Team, including Team leaders, coaches, doctors and athletes will receive a participation certificate available to download.

### **XIII. DRAWING LOTS/SCHEDULE**

---

All Teams are requested to carefully check all personal and event information before the draw lot date.

Team leader, coach, or athletes shall have the opportunity to view participants online via website 7 days prior to the tournament. "Draw Lots" will take place on **May 10th, 2026** between 09:00 and 17:00 Eastern Time to draw their lots for each registered event. Teams or competitors who do not appear on the participation list will not be drawn and will be assigned first slot after **May 10th, 2026** with penalty if applicable.

All Teams are requested to carefully check the competition event draw and order lists 3 days after the draw lot deadline on **May 10th, 2026**.

**\*Combat events will be assigned shortly after preliminary registrations to inform bouts and match ups with live updates leading to the final entry deadline.**

## XIV. HOW TO REGISTER ONLINE

---

ScanQR code to go to the registration page



or visit:

<https://fitofan.com/2026-prov-wushu-classic>